

PHILIPPINES

Wage

Minimum wage rates

Region	Non- Agriculture	Agriculture	Region	Non- Agriculture	Agriculture
NCR	475-512	P475	VII	308-366	288-348
CAR	270-300	270-300	VIII	285	245-251
I	243-280	243-252	IX	296	283
II	340	320	X	316-338	304-326
III	329-380	302-350	XI	340	335
IVA	293-378.5	293-353.5	XII	295	272
IVB	247-290	247-290	XIII	290	290
V	280-290	280-290	ARMM	265	255
VI	271.5-323.5	271.5-281.5			

Region with Exemption Provision

NCR	Region IX
Region I	Region X
Region II	Region XI
Region III	Region XII
Region IVA	CARAGA
Region VI	

Application for Exemption

**24** applications disposed  
**22** applications pending resolution

as of December 2017

Source: NWPC, December 2017

Compliance Rate (2016)

Minimum Wage

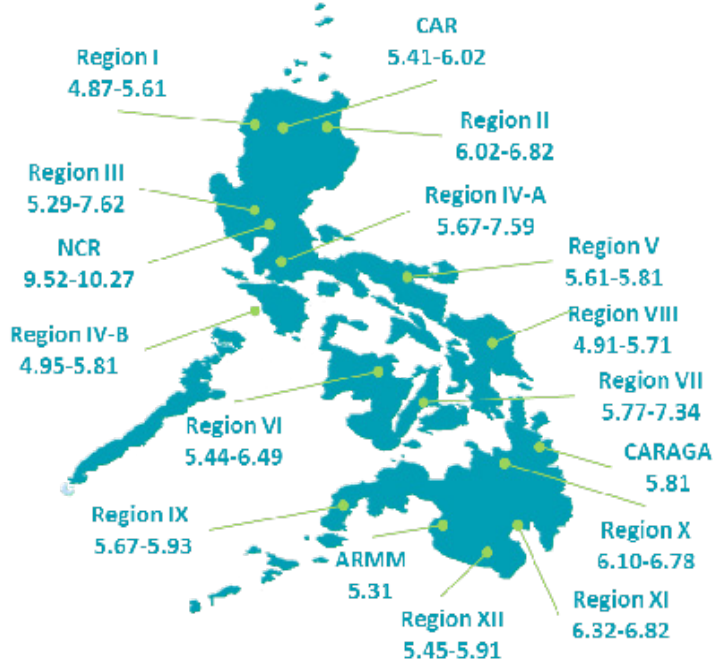
84.4%

Establishments Covered

60,311

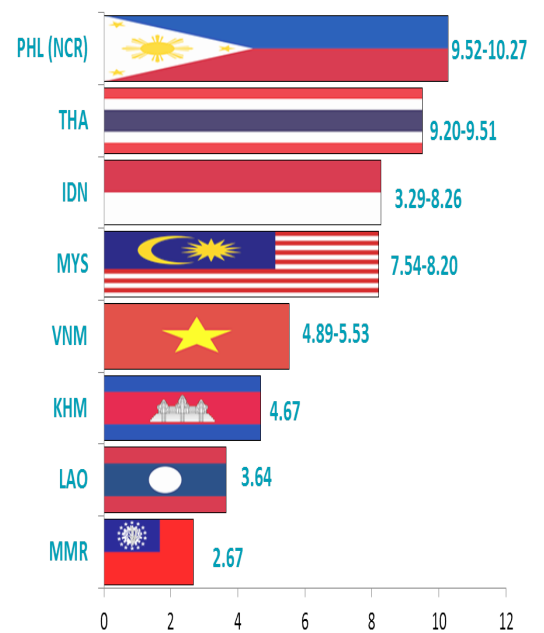
Source: BWC LLCS-MIS, 2017

Comparative Daily Minimum Wages Across Regions (in US Dollar) as of 29 December 2017



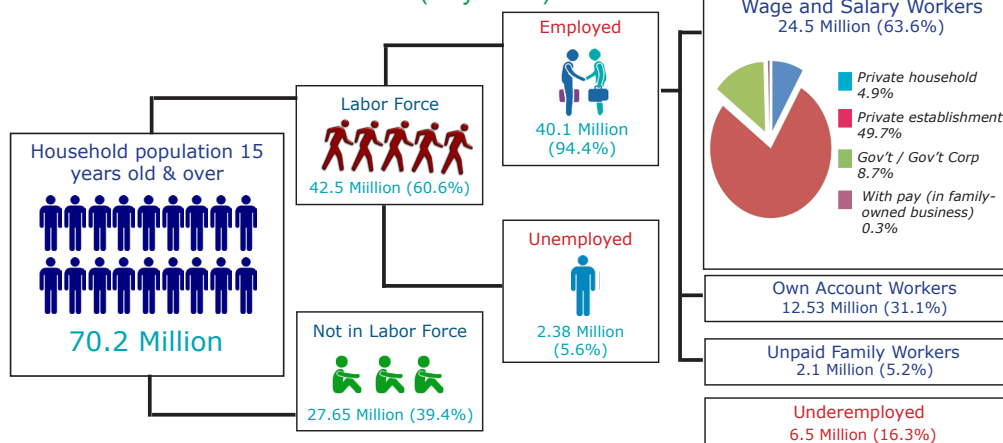
Source of data: NWPC/RTWPBs; \*Oanda.com(FX currency converter)

Comparative Daily Minimum Wages in ASEAN Member Countries (in US Dollar) as of 29 December 2017



Sources of data: Internet web page of respective countries and other press releases; \*Oanda.com(FX currency converter)

Labor Force and Related Statistics (July 2017)



Source: PSA, NWPC, 2017

Wage-Related Statistics

Year	CPI	IR
2017 (Dec)	151.1	3.3
2016	144.0	1.8
2015	141.5	1.4
2014	139.5	4.1
2013	134.0	3.0
2012	130.1	3.2
2011	126.1	4.7
2010	120.4	3.8

Source: PSA, NWPC, 2017

## Establishment Profile

### Number of Establishments by Sector

TOTAL	Agriculture	Industry	Service
<b>915,726</b>	9,216	123,753	782,757
% share	1.0	13.5	85.5

### Number of Establishments by Employment Size

TOTAL	Micro	Small	Medium	Large
<b>915,726</b>	820,795	86,955	4,018	3,958
% share	89.6	9.5	0.4	0.4

Source: List of Establishments, PSA, 2016

### Total Employment by Industry, Philippines: 2016

Philippines	Agriculture	Industry	Service
<b>7,710,908</b>	203,448	1,918,456	5,589,004
% share	2.6	24.9	72.5

### Number of Total Employment by Employment Size, 2016

Total	Micro	Small	Medium	Large
<b>7,710,908</b>	2,345,992	1,981,316	551,871	2,831,729
% share	30.4	25.7	7.2	36.7

Source: List of Establishments, PSA, 2016

### Employed Persons, April 2017 (In thousands)

Philippines	Agriculture	Industry	Service
<b>40,271</b>	10,514	7,431	22,327
% share	26.1	18.5	55.4

Source: Labor Force Survey, PSA, 2017

Sector	Labor Productivity (in pesos) Current Prices 2016	Gross Domestic Product and Gross Value Added (in million pesos) Current Prices 2016	% share
Philippines	353,206	14,480,720	
Agriculture	126,321	1,397,615	9.7
Industry	623,614	4,464,453	30.8
Service	378,426	8,618,652	59.5

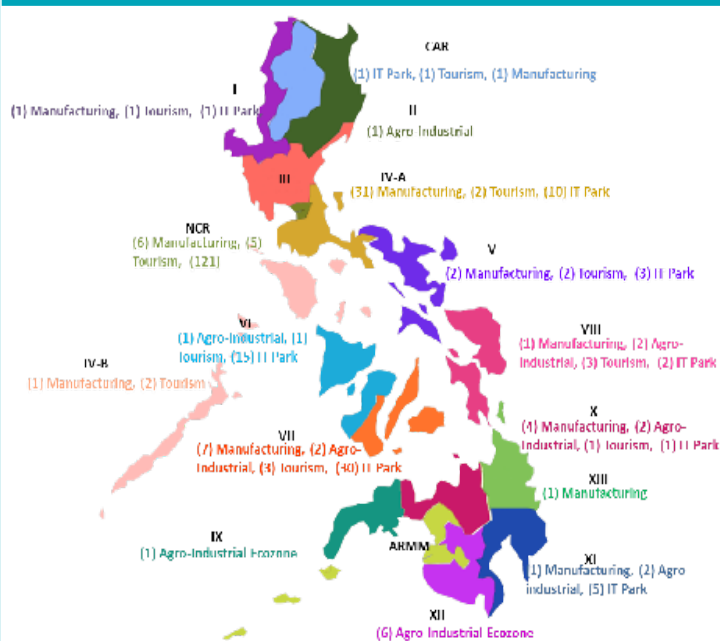
Source: PSA, 2017

### Total Approved Investment of Foreign and Filipino Nationals by Region, Philippines: 2017 (in million pesos)

PHL	Q1 2016	Q1 2017	%
	99,698.3	121,455.8	21.8

Source: Authority of the Freeport Area of Bataan (AFAB), Board of Investments ARMM (BOI ARMM), Clark Development Corporation (CDC), Cagayan Economic Zone Authority (CEZA), Philippine Economic Zone Authority (PEZA) and Subic Bay Metropolitan Authority (SBMA)

## Economic Zones



## Advisory on Tier 2

- NCR: Tourism Industry, Medical and Healthcare Tourism; Tourist Bus Transportation Service; Education Services
- CAR: Administrative & Support Services Group; Hotels and Restaurants and other Service Providers; Manufacturing; Wholesale, Retail Trade and Motorshop
- RBI: Tourism
- RBII: Higher Education Institutions
- RBIII: Manufacturing; Wholesale/Retail Trade, Repair of Motor Vehicles and Motorcycles; Accommodation and food service
- RBIVA: Agribusiness; Services; Industry
- RBIVB: Tourism Industry
- RBV: Transportation/Storage
- RBVI: Sugar Industry
- RBVII: Hotels, Resorts and Restaurants
- RBVIII: Hotel and Restaurant Industry
- RBIX: Canning Industry
- RBX: Bus Transport Industry
- RBXI: Banana Plantation
- RBXII: ITC Plantation; Manufacturing and Retail & Service
- RBXIII: Mining

Household Population  
**100,571,703**

Average Household Size  
**4.4**

Number of Household  
**22,984,971**

2015 Census of Population



Overseas Filipino Workers

**2.32 M**

Source: PSA-LFS, October 2016

\* data from Commission on Higher Education AY 2015-2016

\*\* data from TESDA, 2016

\*\*\* data from Department of Education SY 2015-2016

Household Pop. by Age Group, Philippines: 2010

0-24	48,763,464
25-44	25,575,209
45 & over	17,759,305

Graduates

College*	645,973
Tech-Voc**	2,151,236
High School***	1,528,199

## NWPC

Chairperson: **Sec. Silvestre Bello, III**

Chairperson-Designate: **Usec. Bernard P. Olalia**

Vice Chairpersons:

**Rosemaries G. Edillon (NEDA)** **Virgilio P. Fulgencio (DTI)**

Management Representatives Labor Representatives

**Lucila Castillo-Tarriela-2016** **Cedric R. Bagtas-1990**

Vacant

**David L. Diwa, Jr.-2000**

## DO 18-A Registration (2016)

Manpower service provider: 1,333

Security agencies: 607

Others: 3,203

**Total: 5,143**

Source of data: BWC, April 2016

## NWPC Personnel Complement

79 permanent staff and 5 outsourced

## NWPC Budget

Total - 79.3 M PS - 49.9 M MOOE - 29.4 M