

PHILIPPINES

Wage

Minimum wage rates

Region	Non- Agriculture	Agriculture	Region	Non- Agriculture	Agriculture
NCR	475-512	P475	VII	308-366	288-348
CAR	270-300	270-300	VIII	285	245-251
I	256-310	256-265	IX	296	283
II	340	320	X	316-338	304-326
III	329-380	302-350	XI	340	335
IVA	293-378.5	293-353.5	XII	295	272
IVB	247-290	247-290	XIII	300	300
V	280-290	280-290	ARMM	265	255
VI	271.5-323.5	271.5-281.5			

Source: NWPC, February 2018

Region with Exemption Provision

NCR	Region IX
Region I	Region X
Region II	Region XI
Region III	Region XII
Region IVA	CARAGA
Region VI	

Application for Exemption

49 applications received

as of January 2018

Compliance Rate (2017)

Source: BWC LLCS-MIS, 2018

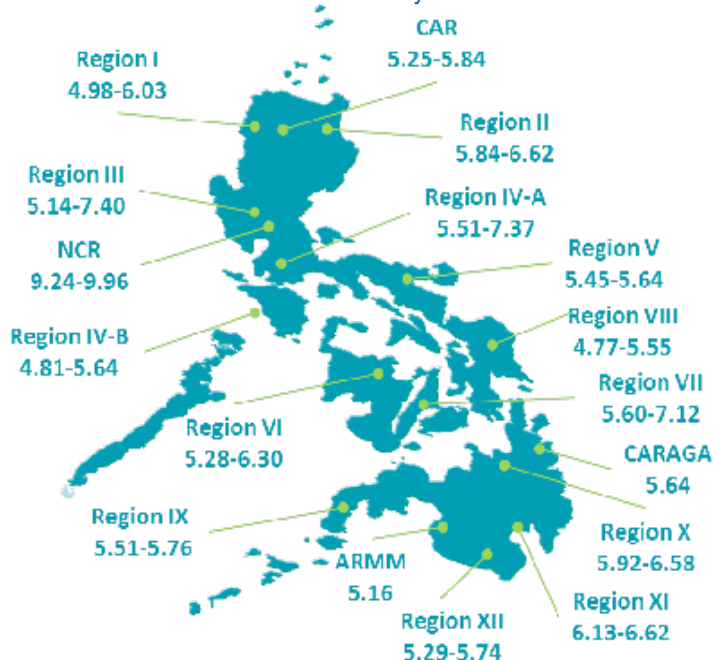
Minimum Wage

85.2%

Establishments Covered

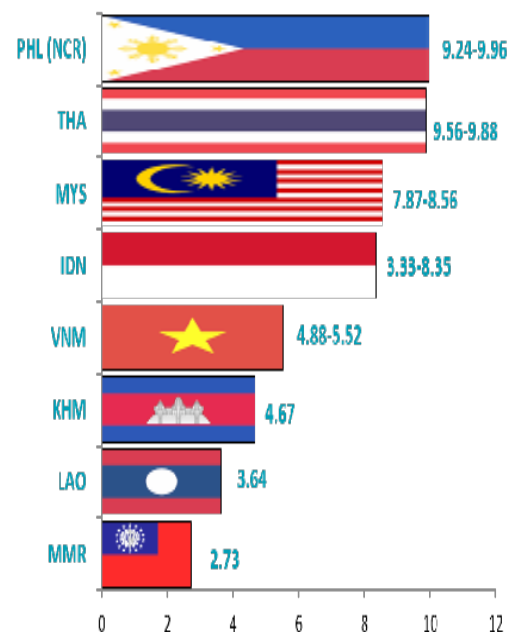
60,372

Comparative Daily Minimum Wages Across Regions (in US Dollar) as of 31 January 2018



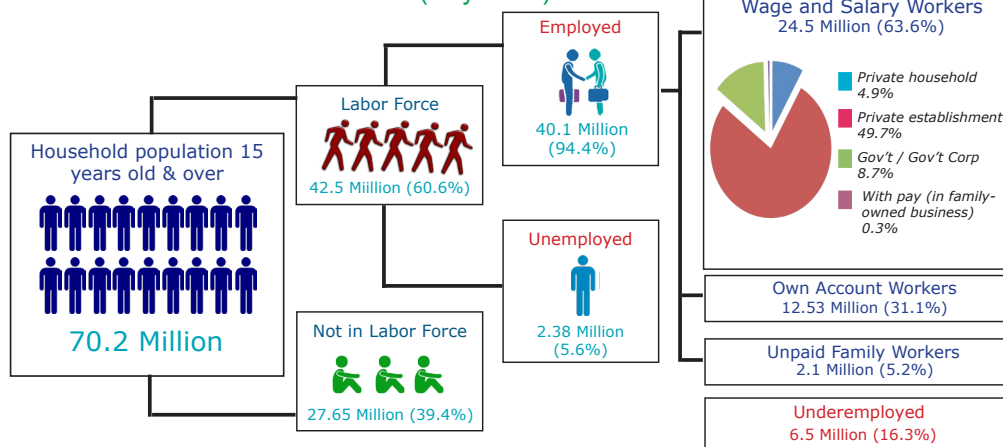
Source of data: NWPC/RTWPBs; *Oanda.com(FX currency converter)

Comparative Daily Minimum Wages in ASEAN Member Countries (in US Dollar) as of 31 January 2018



Sources of data: Internet web page of respective countries and other press releases; *Oanda.com(FX currency converter)

Labor Force and Related Statistics (July 2017)



Source: PSA

Wage-Related Statistics

Year	CPI	IR
2018 (Jan)	152.6	4.0
2017	148.6	3.2
2016	144.0	1.8
2015	141.5	1.4
2014	139.5	4.1
2013	134.0	3.0
2012	130.1	3.2
2011	126.1	4.7

Source: PSA

Establishment Profile

Number of Establishments by Sector

TOTAL	Agriculture	Industry	Service
915,726	9,216	123,753	782,757
% share	1.0	13.5	85.5

Number of Establishments by Employment Size

TOTAL	Micro	Small	Medium	Large
915,726	820,795	86,955	4,018	3,958
% share	89.6	9.5	0.4	0.4

Source: List of Establishments, PSA, 2016

Total Employment by Industry, Philippines: 2016

Philippines	Agriculture	Industry	Service
7,710,908	203,448	1,918,456	5,589,004
% share	2.6	24.9	72.5

Number of Total Employment by Employment Size, 2016

Total	Micro	Small	Medium	Large
7,710,908	2,345,992	1,981,316	551,871	2,831,729
% share	30.4	25.7	7.2	36.7

Source: List of Establishments, PSA, 2016

Employed Persons, April 2017 (In thousands)

Philippines	Agriculture	Industry	Service
40,271	10,514	7,431	22,327
% share	26.1	18.5	55.4

Source: Labor Force Survey, PSA, 2017

Sector	Labor Productivity (in pesos) Current Prices 2016	Gross Domestic Product and Gross Value Added (in million pesos) Current Prices 2016	% share
Philippines	353,206	14,480,720	
Agriculture	126,321	1,397,615	9.7
Industry	623,614	4,464,453	30.8
Service	378,426	8,618,652	59.5

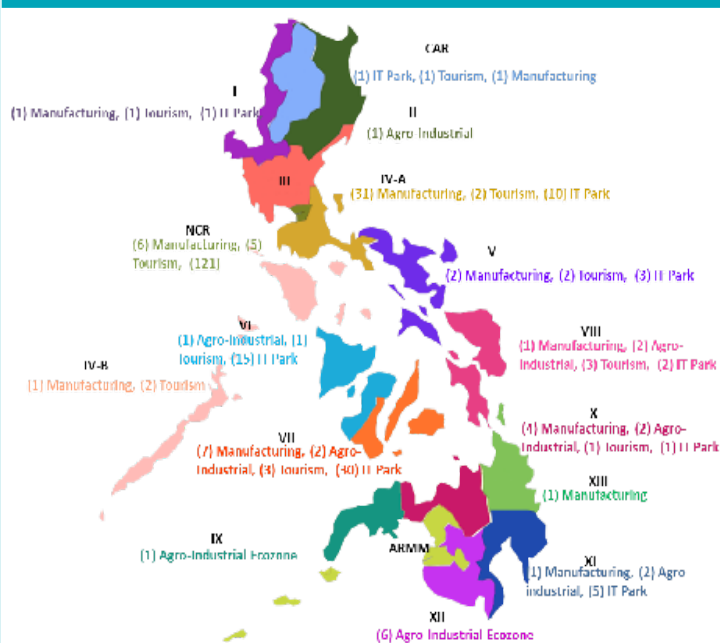
Source: PSA, 2017

Total Approved Investment of Foreign and Filipino Nationals by Region, Philippines: 2017 (in million pesos)

PHL	Q1 2016	Q1 2017	%
	99,698.3	121,455.8	21.8

Source: Authority of the Freeport Area of Bataan (AFAB), Board of Investments ARMM (BOI ARMM), Clark Development Corporation (CDC), Cagayan Economic Zone Authority (CEZA), Philippine Economic Zone Authority (PEZA) and Subic Bay Metropolitan Authority (SBMA)

Economic Zones



Advisory on Tier 2

- NCR: Tourism Industry, Medical and Healthcare Tourism; Tourist Bus Transportation Service; Education Services
- CAR: Administrative & Support Services Group; Hotels and Restaurants and other Service Providers; Manufacturing; Wholesale, Retail Trade and Motorshop
- RBI: Tourism
- RBII: Higher Education Institutions
- RBIII: Manufacturing; Wholesale/Retail Trade, Repair of Motor Vehicles and Motorcycles; Accommodation and food service
- RBIVA: Agribusiness; Services; Industry
- RBIVB: Tourism Industry
- RBV: Transportation/Storage
- RBVI: Sugar Industry
- RBVII: Hotels, Resorts and Restaurants
- RBVIII: Hotel and Restaurant Industry
- RBIX: Canning Industry
- RBX: Bus Transport Industry
- RBXI: Banana Plantation
- RBXII: ITC Plantation; Manufacturing and Retail & Service
- RBXIII: Mining

Household Population
100,571,703

Average Household Size
4.4

Number of Household
22,984,971

2015 Census of Population

Household Pop. by Age Group,
Philippines: 2010

0-24	48,763,464
25-44	25,575,209
45 & over	17,759,305

Graduates

College*	645,973
Tech-Voc**	2,151,236
High School***	1,528,199

Source: PSA-LFS, October 2016

* data from Commission on Higher Education AY 2015-2016

** data from TESDA, 2016

*** data from Department of Education SY 2015-2016

DO 18-A Registration (2017)

Manpower service provider: 912

Security agencies: 479

Others: 2,146

Source of data: BWC, December 2017

Total: 3,537

NWPC

Chairperson: **Sec. Silvestre Bello, III**

Chairperson-Designate: **Usec. Bernard P. Olalia**

Vice Chairpersons:

Rosemaries G. Edillon (NEDA) **Virgilio P. Fulgencio (DTI)**

Management Representatives: **Lucila Castillo-Tarriela-2016** Labor Representatives: **Cedric R. Bagtas-1990**

Vacant: **David L. Diwa, Jr.-2000**

NWPC Personnel Complement

79 permanent staff and 5 outsourced

NWPC Budget

Total - 79.3 M PS - 49.9 M MOOE - 29.4 M